

QUALIPIECES

USER'S GUIDE

Thank you for choosing a Qualipieces product, designed by passionate snomobilers with the real needs of users in mind

We have designed this handy guide for you in order to give you all the information you need about the RollerSki you have purchased. By respecting the advice and the recommendations included in this guide, you make sure that your RollerSki will always be in good condition and that you will be able to enjoy it thoroughly.

Table of contents

1. Warning
2. Parts
3. Installation
4. Engagement and disengagement
5. Using the RollerSki
6. Maintenance
7. Limited Warranty

This guide provides detailed instructions for installing this product.

AVAILABLE KIT

B-2005, B-2500

1. WARNING

WARNING



FOR YOUR SAFETY, READ ALL THE DOCUMENTATION ASSOCIATED WITH THE PRODUCT BEFORE USING IT. IT IS NOT RECOMMENDED TO INSTALL A ROLLERSKI ON A SKI MODEL FOR WHICH IT IS NOT SPECIFICALLY INTENDED.

MISUSE CAN RESULT IN PERSONNAL INJURIES.
WRONG INSTALLATION CAN RESULT IN PERSONNAL INJURIES OR MATERIAL DAMMAGE.

CAUTION



USE CAUTION AT ALL TIMES. THE WHEEL'S RETURN MECHANISM IS BOTH POWERFUL AND VERY FAST.

SAFETY INSTRUCTIONS



THE ROLLER SKI HAS DEMONSTRATED SAFE USE AT **SPEEDS BELOW 20KM/H OR 12MILES/H.**

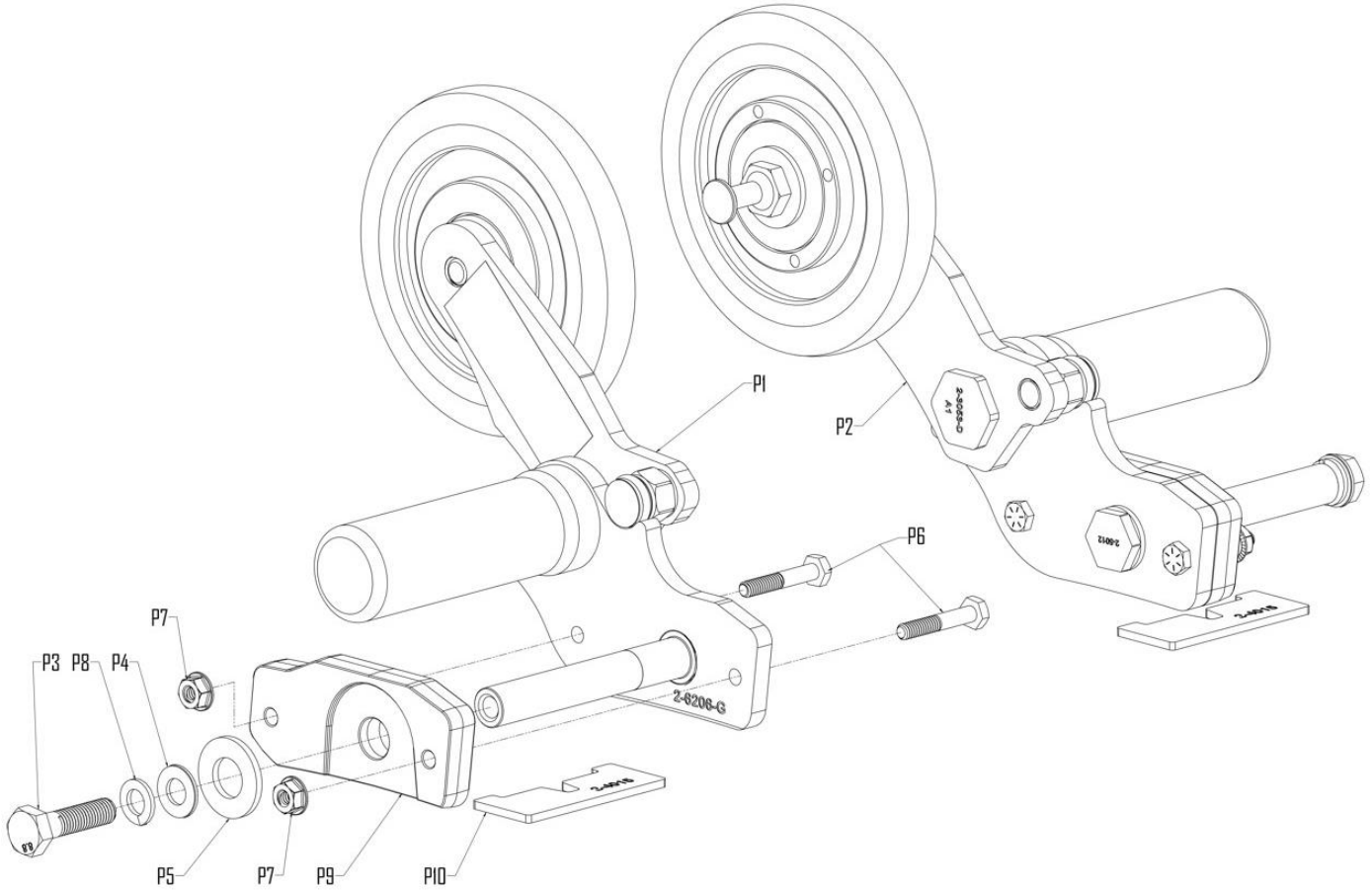
WARNING

It is essential to follow installation procedures, have knowledge of general mechanics and use the appropriate tools for safe and reliable installation of this product.

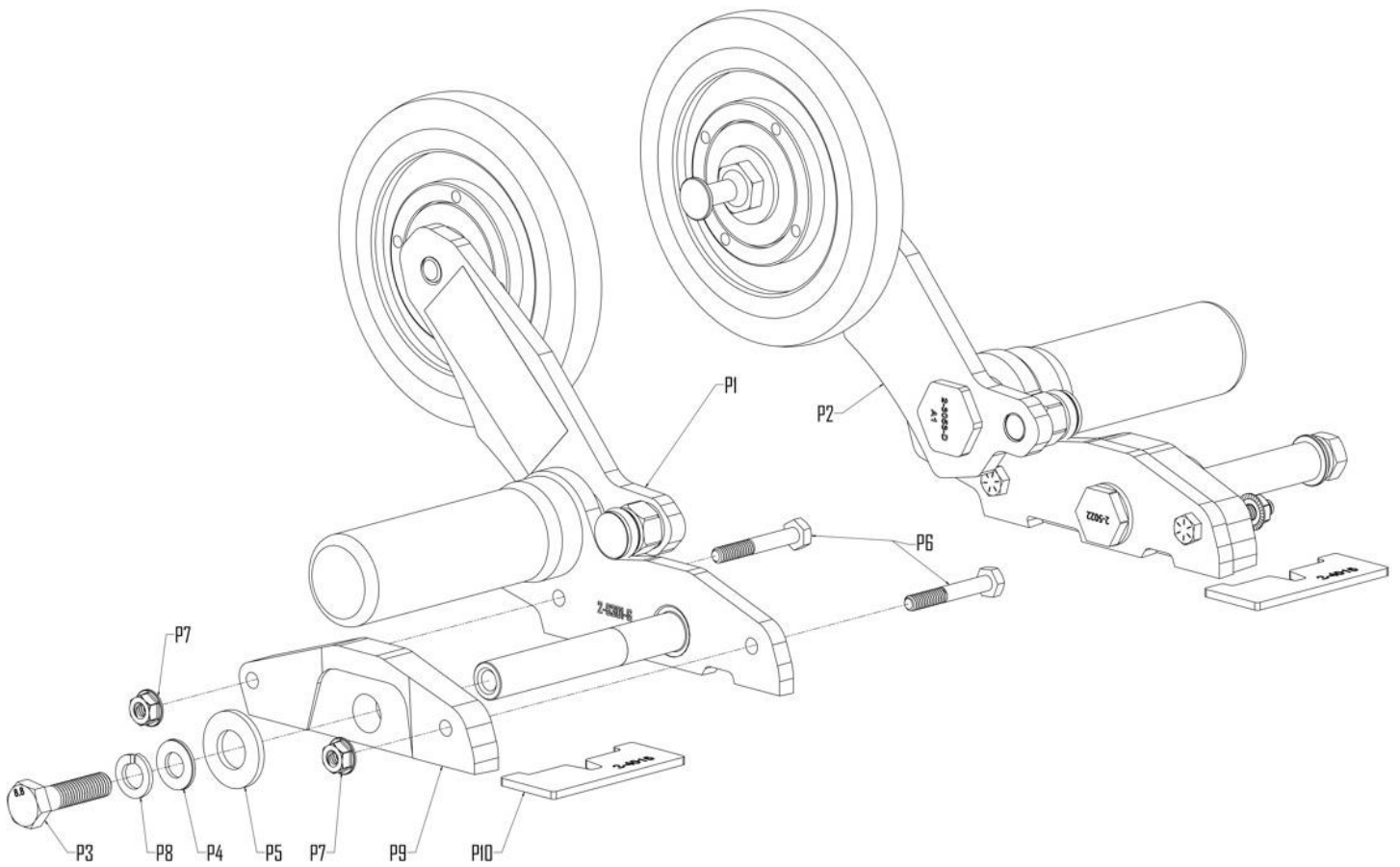
Misuse, improper installation, or any other modification made to adapt the product for use in a context other than that for which it was designed voids any warranty and may result in **SERIOUS INJURY**.

Qualipieces company, and all their affiliated companies, as well as their suppliers and distributors, disclaim all liability in connection with any consequences of inappropriate or non-recommended use or installation.

2. PARTS
B-2005



NO	DESCRIPTION	QTY
P1	Left RollerSki	1
P2	Right Rollerski	1
P3	Bolt	2
P4	Washer	2
P5	Washer	2
P6	Bolt	4
P7	Lock Nut	4
P8	Lock Washer	2
P9	Side shim	2
P10	Below shim	2



NO	DESCRIPTION	QTY
P1	Left RollerSki	1
P2	Right Rollerski	1
P3	Bolt	2
P4	Washer	2
P5	Washer	2
P6	Bolt	4
P7	Lock Nut	4
P8	Lock Washer	2
P9	Side shim	2
P10	Below shim	2

3. INSTALLATION

Read all instructions carefully before installing this product.

WARNING

For safety reasons, this assembly must be installed by a person with general mechanical knowledge and the right tools. If you do not have the tools or technical knowledge to properly install this product, have it installed by an authorized dealer.

The illustrations in this document show the typical structure of the different assemblies. It is therefore possible that they do not represent the exact shape of the parts nor their manufacturing details. These illustrations are intended to identify parts that perform the same or similar function.

INSTALLATION TIME

Expect around 30 minutes per RollerSki, for an approximate total of 60 minutes.

TOOLS REQUIRE FOR INSTALLATION

Vous aurez besoin des outils suivants pour accomplir l'ensemble des opérations prescrites pour l'installation de ce produit :

- a) Lifting system with the appropriate lifting capacity
- b) set of ratchets adapted to your snowmobile
- c) set of metric and/or imperial wrenches
- d) rigid plastic mallet
- e) grease gun and low temperature synthetic grease
- f) drill (electric or battery operated)
- g) ¼" drill bit
- h) **Loctite*263™** brand thread adhesive
- i) cloth

INSTALLATION INSTRUCTIONS

- Read all the instructions carefully before installing the product.
- Make sure you have enough space to work properly.
- Make sure to have the required tools.

Note: Unless there are differences between the left and right sides, procedures are shown for only one side of the vehicle, the left side. Repeat for the other side. The right and left sides are defined as sitting on the vehicle.

WARNING

If you are using a lifting system, pay particular attention to the area where you will lift the vehicle. There are risks with poorly positioned lifting equipment. Never place any part of your body under a vehicle that has not been properly installed and secured.

A. Positioning the RollerSki on snowmobile



B. Vehicle preparation

- 3.1. Use a lift system to lift the skis off the ground.
- 3.2. Refer to your owner's manual for ski removal instructions.

- 3.3. Remove the original screw and set aside.

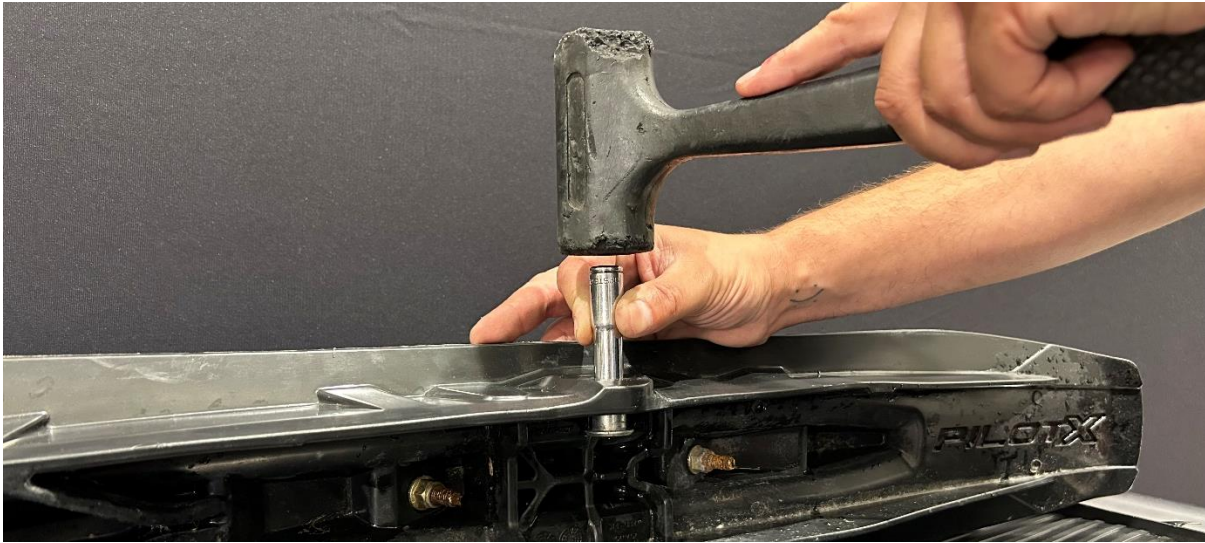
Note : Ski shown is for reference only and may vary depending on the model.



- 3.4. Remove ski axle from the leg and the original spacers. Set the original spacers aside.



3.5. Remove bushing from the inside of the ski.

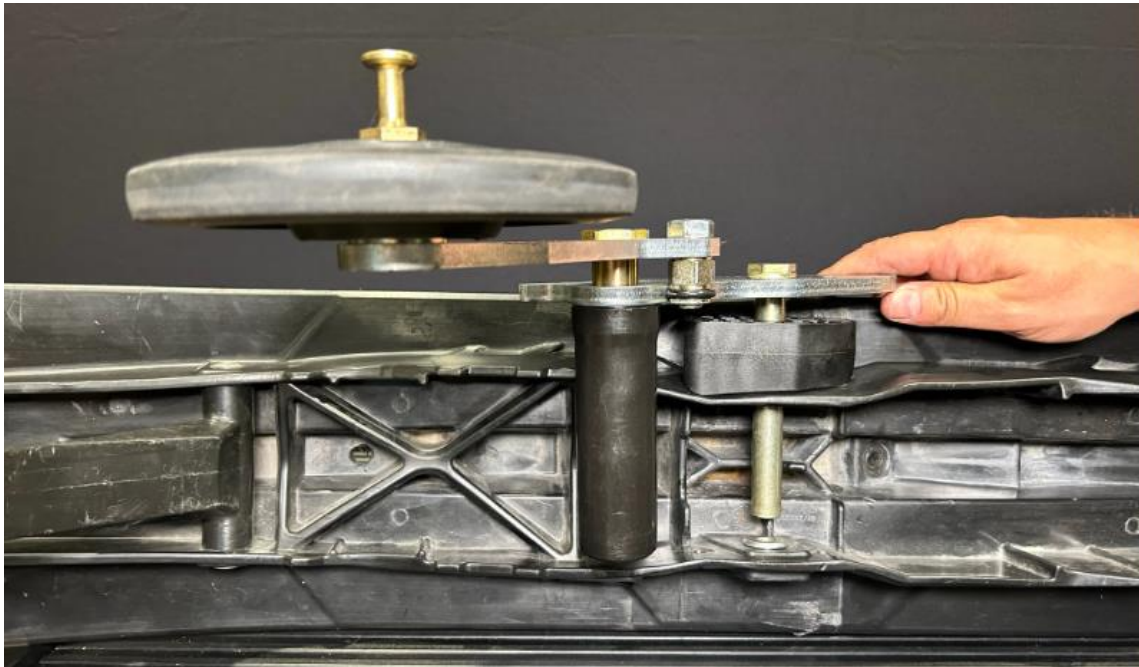


C. RollerSki preparation

3.6. Remove hardware [P3] to [P9] from the RollerSki base.
Refer to the exploded view in section: 2 – PARTS

D. Ski drilling

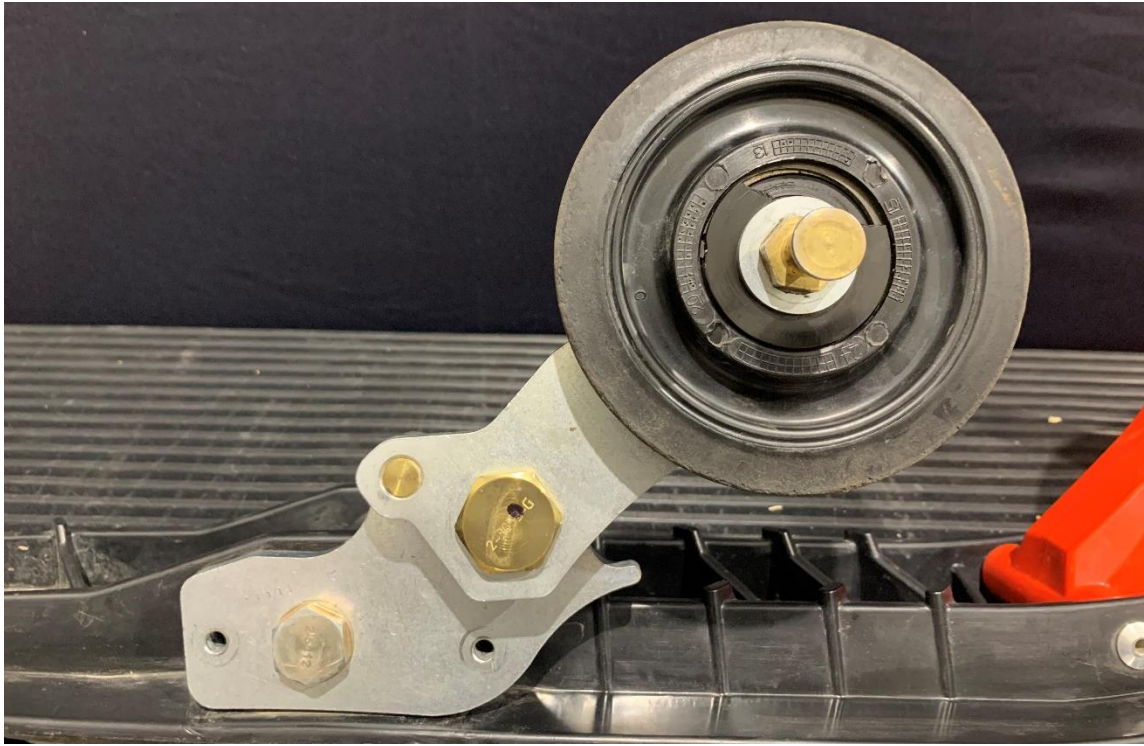
- 3.7. Insert the Rollerski axle into the side shim [P9] and into the hole of the removed bushing. Firmly press the base and the shim onto the shoulder of the ski.



- 3.8. Temporarily screw the bolt [P3] into the axle for added stability.



3.9. Place the base of the RollerSki parallel to the ski.



3.10. Using the holes in the base of the RollerSki as a guide, drill the shoulder of the ski with a 1/4" drill bit. Drill only the side where the RollerSki is installed.



3.11. Remove the RollerSki and clean the surface thoroughly.



E. Ski preparation

3.12. Insert the below shim [P10] into the ski.

Note : The below shim must be installed towards the rear of the ski, under the ski rubber, in order to keep the ski level and prevent the front of the ski from tilting downward. We have several shapes and models of below shim, but all have the same use. The below shim shown is for reference only and the final product may vary depending on the application.



3.13. Insert the ski rubber above the shim [P10] in the ski.

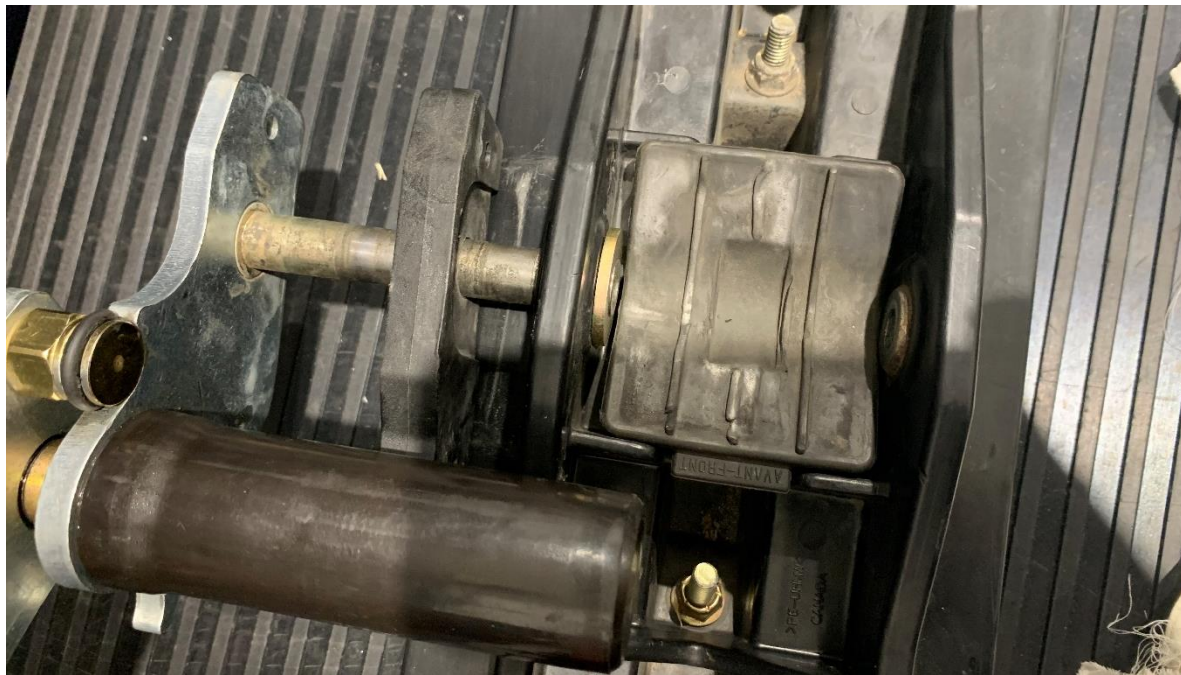


F. RollerSki installation

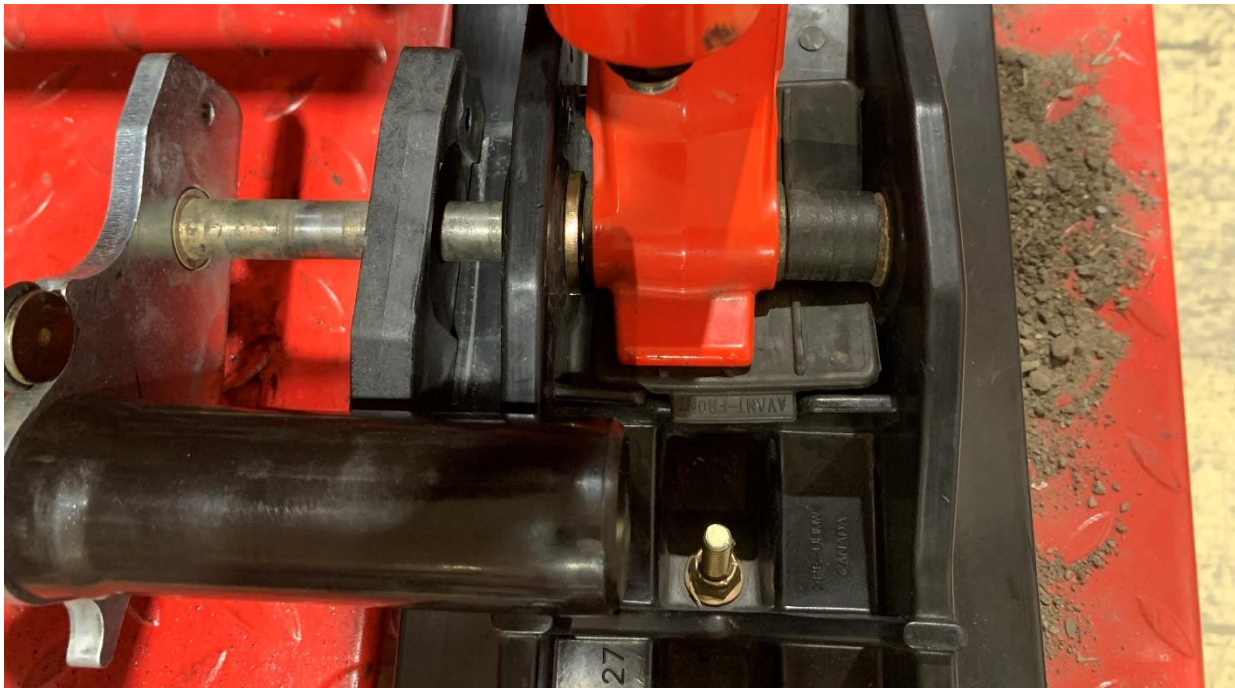
3.14. Lightly grease the RollerSki axle.



3.15. Insert the shim [P9] into the RollerSki axle. Pre-engage the RollerSki axle in the ski, put the washer [P5] from the hardware removed earlier. The washer is used to replace the bushing removed in step 3.5 of vehicle preparation.



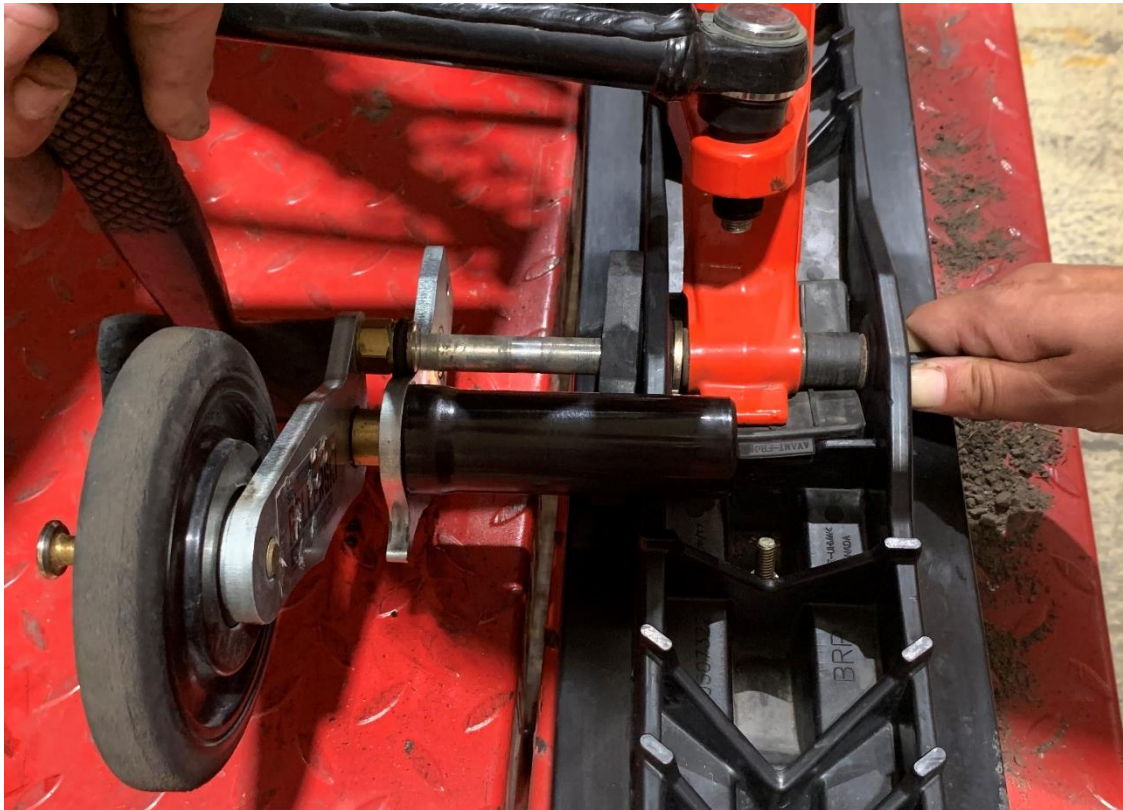
- 3.16. Position the ski under the ski leg and lift the front of the ski to keep pressure on the assembly. Make sure that the holes in the ski and the ski leg are well aligned and that there is enough space to put the second original spacer. Lower the snowmobile onto the ski rubber.



- 3.17. Take the original screw removed in step 3.3 of vehicle preparation and insert it through the ski, spacer and ski leg up to the RollerSki axle. Tighten by hand. This will make it easier to pass the axle through the ski leg



- 3.18. While pulling the original screw previously screwed in the RollerSki axis, tap on the base of the RollerSki with a rigid plastic mallet to position the RollerSki on the ski. Remove the original screw.



- 3.19. Apply red **Loctite 263** to the threads of the bolt [P3].

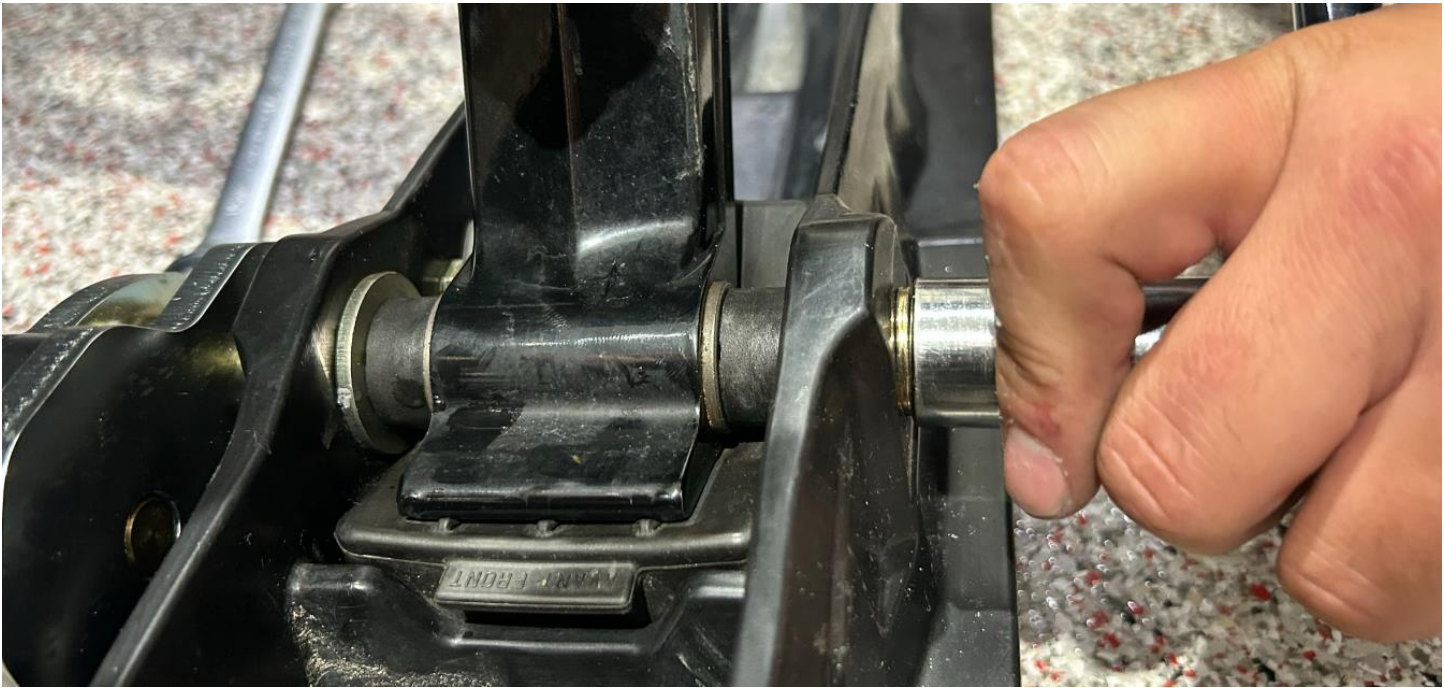


3.20. Insert the lock washer [P8] and the washer [P4] into the bolt [P3]. Inserted the assembly into the axle.

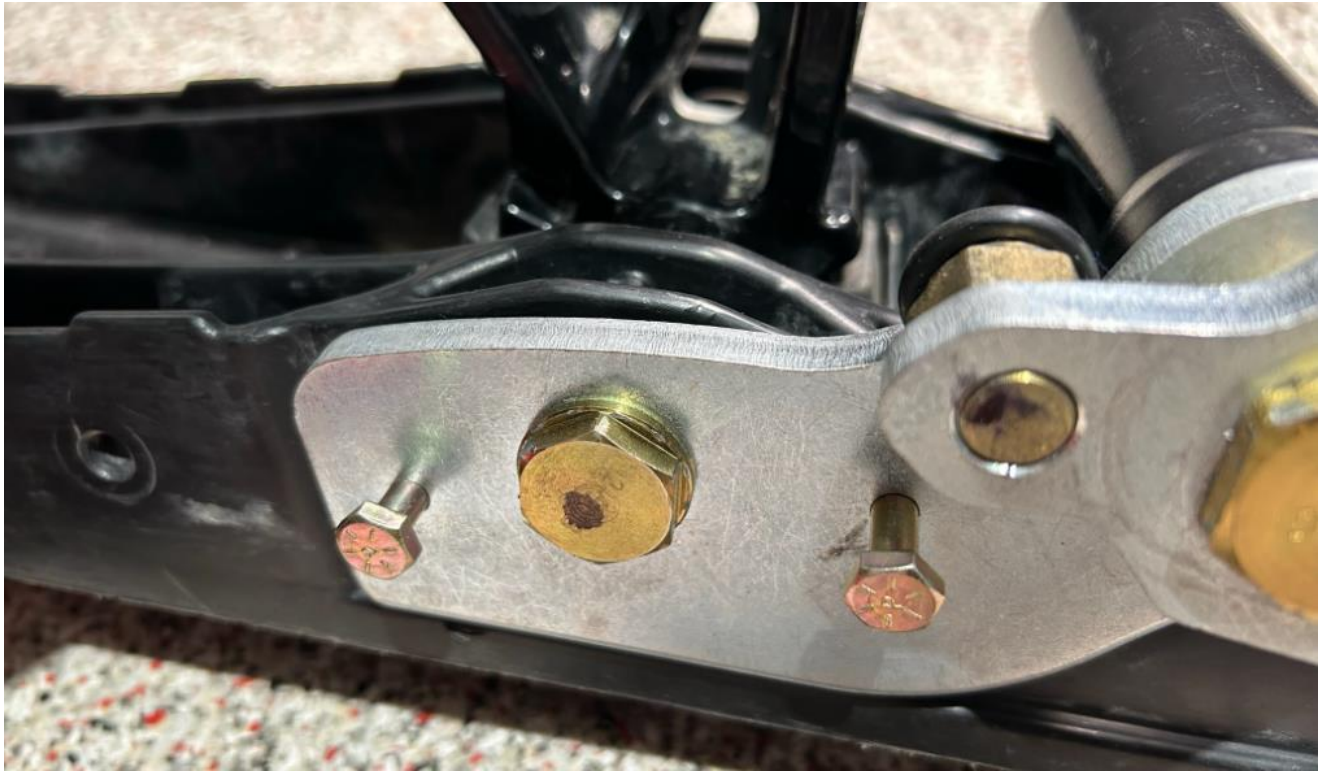


3.21. Tighten the bolt [P3] in the axle. Tighten to specified torque.

Tightening torque	lbs*po
Bolt [P3]	310 ± 15



3.22. Insert the security bolts [P6].

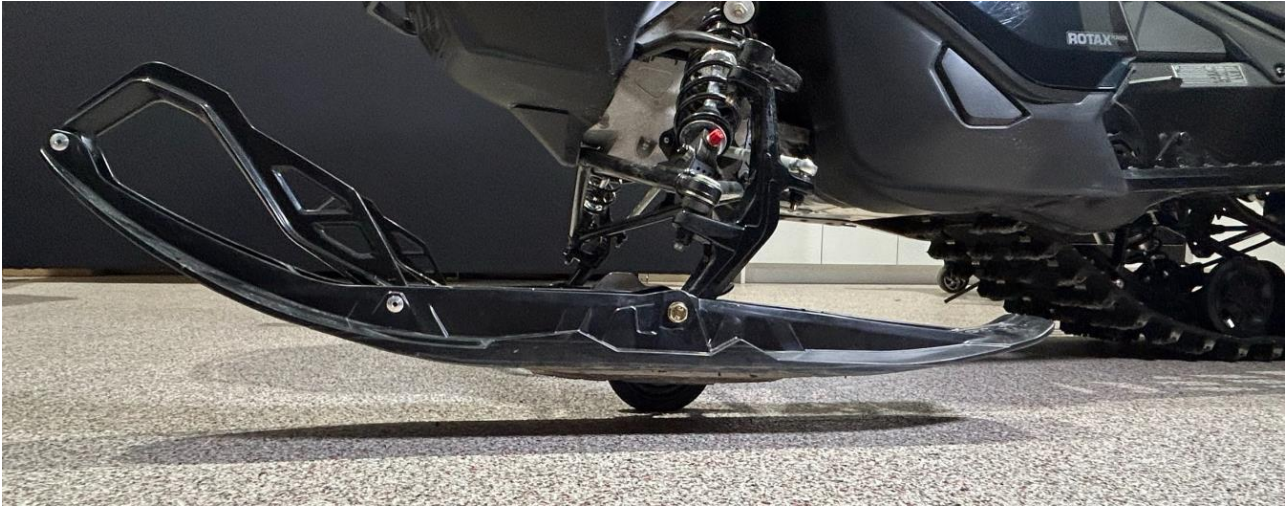


3.23. Insert nuts [P7] on safety bolts [P6]. Torque to specified torque.

Tightening torque	Lbs*po
Bolt [P6]	75 ± 4



3.24. Engage the RollerSki. The ski should be horizontal. The front of the ski should not touch the ground.



3.25. Repeat the steps for the other side.

3.26. End of installation.

4. ENGAGEMENT AND DISENGAGEMENT

4.1. ROLLERSKI ENGAGEMENT

- a) Engagement of the RollerSki requires neither great force nor strong pressure, but rather a good position and a good movement. See the following steps:
- b) Position yourself in front of the snowmobile, facing the front, between the skis.
- c) To engage the RollerSki on the snowmobile's left side, place your right foot perpendicularly under the left ski's front part to get a steady position.
- d) Place your left foot on the edge golden bolt in the middle of the RollerSki wheel.
- e) With your left foot, push the bolt until the wheel touches the ground.
- f) Clutch the handle controlling the front ski, but do not lift it.
- g) At the same time, push the wheel towards the back of your snowmobile and under the ski with your left foot, and lift the front ski slightly using the handle in your right hand. The weight of the snowmobile will be transferred automatically on the wheel. The left RollerSki is now engaged and ready to use.

4.2. MANUAL DISENGAGEMENT OF THE ROLLERSKI

Do not to use your hand or your fingers to disengage the RollerSki.

- a) Position yourself in front of the snowmobile, between the skis, facing the snowmobile.
- b) Hold the front ski handle.
- c) Lift the front of the ski to release the passage of the RollerSki.

4.3. AUTOMATIC DISENGAGEMENT OF THE ROLLERSKI ON SNOW COVERED SURFACES

RollerSki is conceived in order to disengage itself automatically when the wheels leave the roadway to enter on a soft surface. For this operation, ensure that the RollerSki is beforehand committed.

- a) Slow down in order to prepare a secur entry in the path or snow.
- b) Advance in snow. In contact with covered with snow surface, your RollerSki's will be disengaged automatically. You do not need to immobilize the snowmobile.

4.4. AUTOMATIC DISENGAGEMENT OF THE ROLLERSKI ON FROZEN SURFACES

RollerSki is designed to disengage itself automatically when the wheels leave the roadway to enter a soft surface. On ice or a hard surface, you must follow the following steps (make sure that the RollerSki is engaged):

- a) Slow down in order to transition safely into the path or onto the snow.
- b) Go forward in the snow. If one of your RollerSki stays engaged, leave the path temporarily and safely to give the RollerSki wheels a softer surface. When it comes in contact with this less dense snow, the RollerSki should disengage automatically.
- c) If the RollerSki remains engaged, proceed to a manual disengagement.

5. ROLLERSKI USE

5.1. SAFE USE

RollerSki has demonstrated safe use at speeds below 20km/h or 12miles/h.

5.2. DRIVING ON THE ROADWAY

RollerSki's main function is to enable a snowmobile to use the asphalt or cement roads devoid of asperities (holes, speed bumps, or frost boils) exceeding 2 cm. Ensure that you respect the rules and regulations in effect at all times.

5.3. GET IN AND OUT OF A TRAILER

RollerSki allows you fast and smooth entry and exit of a trailer without damaging it' interior surface. However, make sure that you do not to exceed a height difference of 2 cm between the trailer surface and the ground. Moreover, reduce your speed to the minimum while you get in and out.

5.4. MOVING YOUR SNOWMOBILE

Once installed on your skis, RollerSki is useful to move your snowmobile into your garage or to protect your entryway when you are using your snowmobile.

5.5. USE

- RollerSki is designed for trail vehicles.
- It is not recommended to install RollerSki on your snowmobile if you plan to use it off-trail of any type (mountains, woodlands, fields where the trail is not groomed, etc.).
- Each RollerSki is designed for a specific ski model. For this reason, it is not recommended to use a model for any application other than that intended.

6. MAINTENANCE

In order to maintain your RollerSki in good working condition and to enjoy its full performances, you must conduct routine maintenance as prescribed.

6.1. PERIODIC MAINTENANCE TABLE

	Season Launch	Season In-Between	Season End
Spring lubrication	X		X
Wheel check		X	X
Bolts and nuts check	X	X	X

6.2. SPRING LUBRICATION

6.2.1. COIL SPRING

This type of spring is rolled up in a black plastic cage held between the base and the arm of the RollerSki (approximately 1/2" [13 mm] thick). In the case of a spiral spring model, you must check the level of lubrication of the flat spring.

- a) Disengage the RollerSki as indicated in section 4.2.
- b) Using a cloth, unscrew the black spring cage.
- c) Place your cloth on the ski, under the spring.
- d) Check the quantity of oil inside the tube.
- e) If necessary, add a few drops of 5W30 synthetic oil.
- f) Return the cage to its place by screwing it firmly
- g) Wipe up any oil leaks.
- h) Repeat the previous steps for the other RollerSki.

NOTE : Do not use WD40* or a grease remover.

6.3. WHEEL CHECK

Make sure that the wheels are in perfect condition before leaving on a trip. A wheel with a diameter smaller than 5¼" (133 mm) or that presents major irregularities must be changed.

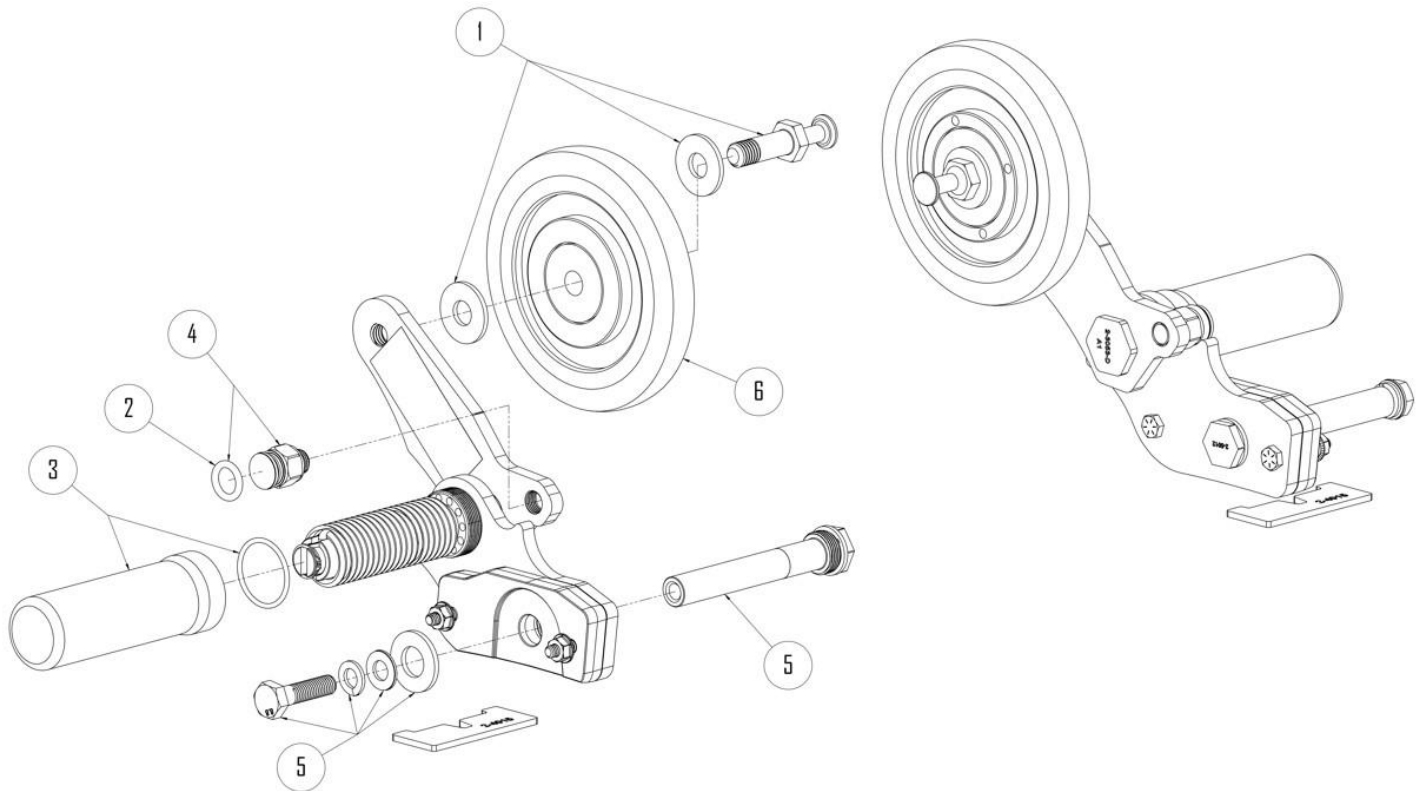
6.4. BOLTS AND NUTS CHECKS

Make sure that the bolts are tight.

6.5. REPLACEMENT PARTS

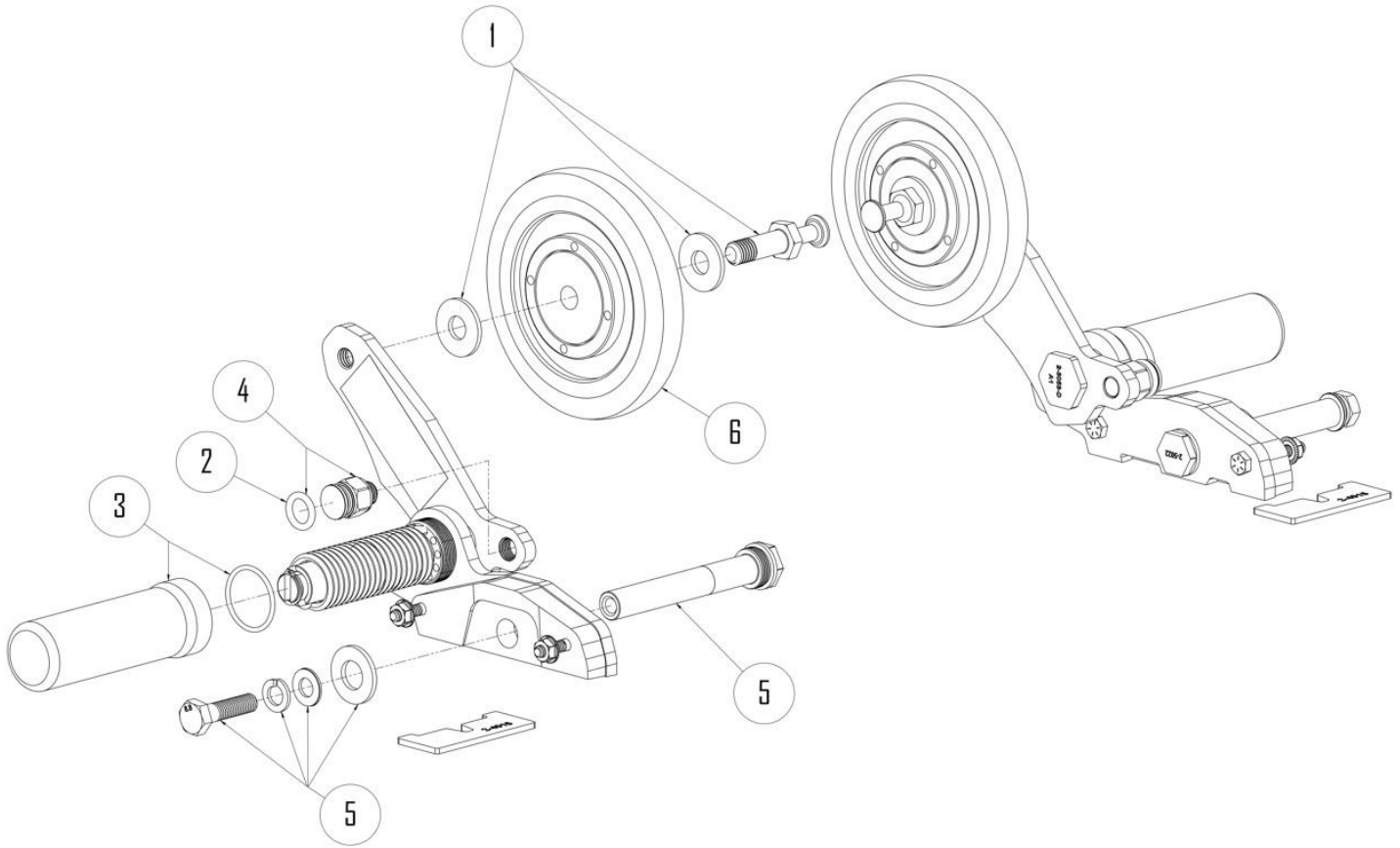
Some sets of parts are available on our website at www.qualipieces.com. Contact your local Qualipieces retailer for all other parts.

B-2005



No.	Replacement kit	Description
1	K02-9003	Hardware Kit - 2 bolts and 4 washers for RollerSki
2	K02-9004	Hardware Kit - 12 rubbers rings for RollerSki stopper bolt
3	K02-9005	Hardware Kit - coil spring cage with sealing washer
4	K02-9006	Hardware Kit - 2 stoppers bolts with 2 rubber ring for RollerSki
5	K02-9024	1 central axle assembly with hardware
6	K02-9201	Hardware Kit - 2 wheels with pad for RollerSki

B-2500



No.	Replacement kit	Description
1	K02-9003	Hardware Kit - 2 bolts and 4 washers for RollerSki
2	K02-9004	Hardware Kit - 12 rubbers rings for RollerSki stopper bolt
3	K02-9005	Hardware Kit - coil spring cage with sealing washer
4	K02-9006	Hardware Kit - 2 stoppers bolts with 2 rubber ring for RollerSki
5	K02-9026	1 central axle assembly with hardware
6	K02-9201	Hardware Kit - 2 wheels with pad for RollerSki

7. LIMITED WARRANTY

Thank you for purchasing a Qualipieces product, designed with proven quality, durability and reliability. This warranty demonstrates our desire to ensure the complete satisfaction of our customers. If you wish to talk to a Qualipieces representative, you will find the contact at www.qualipieces.com.

BENEFICIARY: This limited warranty is valid only for the original purchaser or the person receiving the product as a gift and may not be extended or transferred to any other person.

USE OF THE PRODUCT: The ROLLERSKI is designed to ensure safe travel on an original snowmobile on surfaces with little snow, hard and regular (holes, speed bumps, or frost boils or other major irregularities). The ROLLERSKI has demonstrated safe use at speeds below 20km/h or 12miles/h; any other use will be considered abusive in a context of misuse.

MAINTENANCE: In order to preserve optimal operation and keep the limited warranty of the ROLLERSKI, is necessary to carry out maintenance as prescribed by the user manual.

PURPOSE AND DURATION OF THE LIMITED WARRANTY OF ONE (1) YEAR: Qualipieces guarantees the product is free from any defect in materials and workmanship during the limited warranty period of one (1) year under normal conditions of use. Limited warranty period begins on the day of purchase. The transaction record is your proof of date of purchase.

EXCLUSION OF THIS WARRANTY: This warranty does not cover: normal wear and tear, defects or damage attributable to non-recommended use, lack of and/or improper maintenance, failure to follow installation instructions, improper accident, alteration or modification of the product as well as loss of the product.

WARRANTY REGISTRATION: Failure to register the product does not affect your rights under the limited warranty. Without the original proof of purchase, Qualipieces reserves the right to void this warranty.

OUR COMMITMENT: Qualipieces may at its discretion choose to correct the defect in one of the following ways: (A) replace the product with an equivalent new or refurbished product or (B) offer a partial or total refund of the purchase price original in exchange for the return of the product. Execution of warranty can only be obtained from authorized Qualipieces retailers and at Qualipieces, at its discretion.

RELATED COSTS: In the context of a repair under warranty on the premises of an authorized retailer, this warranty is limited to the cost of replacing parts. At no time does this warranty cover installation or general mechanical costs. In the case of a repair at a retailer, prior authorization from Qualipieces will be required before initiating the repair. In the event that the repair under warranty is carried out at the manufacturer, this warranty is limited to the cost of replacement parts.

EXCLUDED FEES: The warranty does not cover payment of shipping charges, insurance, and any taxes, import duties, or other charges. It does not cover damage to the vehicle that may have been caused by the use of the product.

OTHER CONDITIONS: THE TERMS OF THIS LIMITED WARRANTY ARE IN LIEU OF ALL OTHER WARRANTY, WHETHER EXPRESS OR IMPLIED, WRITTEN OR VERBAL, INCLUDING ANY WARRANTY OF MERCHANTABILITY OR FITNESS FOR A PARTICULAR PURPOSE. ASIO EVO'S MAXIMUM LIABILITY SHALL NOT EXCEED THE ACTUAL PURCHASE PRICE PAID BY THE CONSUMER FOR THE PRODUCT. IN NO EVENT SHALL ASIO EVO BE LIABLE FOR ANY SPECIAL, INCIDENTAL OR CONSEQUENTIAL DAMAGES, WHATEVER THE CAUSE, INCLUDING, WITHOUT LIMITATION, THE REPLACEMENT OF GOODS AND ANY INHERENT COSTS. This warranty is void if the serial number label is removed or defaced. **OTHER RIGHTS:** This limited warranty gives you specific legal rights and you also may have other rights that vary depending on the country or region where you live. Since some places do not allow the limitation on implied warranty or the exclusion or limitation of incidental or consequential damages, the above limitations or exclusions may not apply to you.