

# INSTALLATION GUIDE

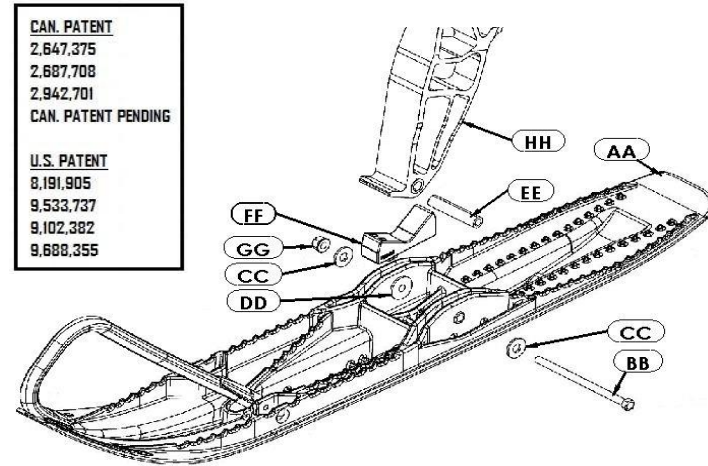
# ROLLERSKI

# P-3003



## STEP A

- 1- Remove bolt #BB, washers #CC and nut #GG.
- 2- Remove ski #AA from spindle #HH.
- 3- Remove sleeve #EE from spindle #HH.

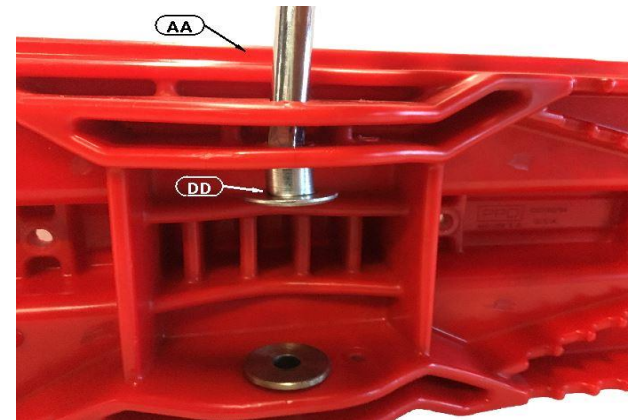


CAN. PATENT  
2,647,375  
2,687,708  
2,942,701  
CAN. PATENT PENDING

U.S. PATENT  
8,191,905  
9,533,737  
9,102,382  
9,688,355

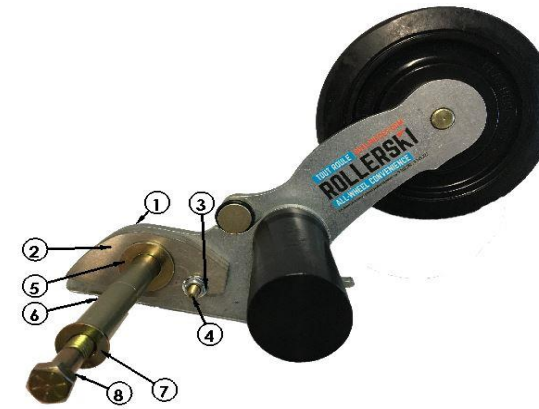
## STEP B

- 4- Remove bushing #DD from ski #AA. (The one on the same side where the ROLLERSKI will be installed.)



## STEP C

- 5- Remove bolts #4 and #8, nuts #3, shims #2, washers #5 and #7, from base #1 of ROLLERSKI.



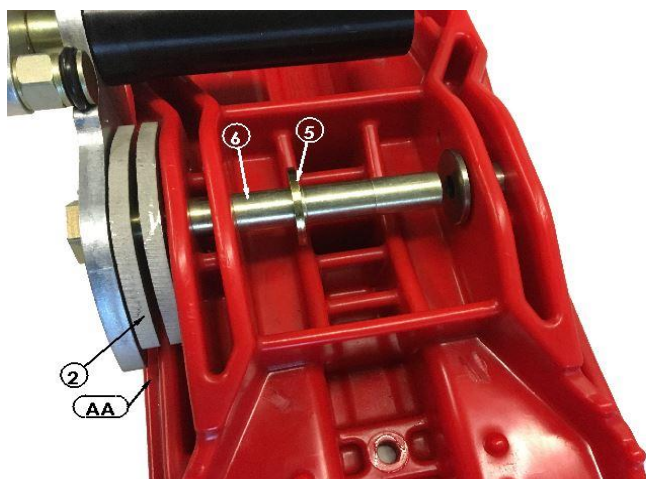
## STEP D

- 6- Insert axle #6 of ROLLERSKI into the ski #AA.
- 7- Temporarily tighten bolt #8 in axle #6 for stability. **(THE BASE SHOULD BE PARALLEL TO THE SKI).**
- 9- Drill thru soulders of ski #AA with 1/4" drill bit, using the hole on the base #1 as a guide.



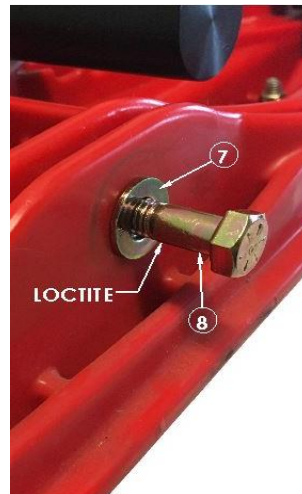
## STEP E

- 10- Remove ROLLERSKI and clean drilled hole of any debris.
- 11- Insert ski stopper #FF\* into ski #AA.
- 12- Lightly grease axle #6 of ROLLERSKI.
- 13- Insert axle #6 of ROLLERSKI, into shims #2, ski #AA, washer #5\* and spindle #HH\*



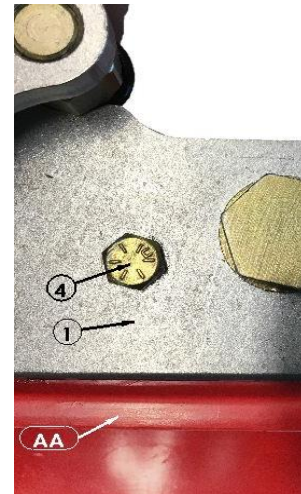
## STEP F

- 14- Insert washer #7 on bolt #8.
- 15- Apply **red Loctite 263** on threads and screw bolt #7 on axle #6, as per the same manufacturer's specifications of bolt #BB.



## STEP G

- 16- Insert bolts #4 into base #1, shims #2 and ski #AA.
- 17- Tighten nut #3 on bolt #4.



**\* THE WASHER (#5) WILL REMPLACES THE BUSHING REMOVED AT STEP B**

**\*\* THE SPINDLE (#HH), SKI STOPPER (#FF) ARE NOT SHOWN FOR MORE CLARITY.**

**THE ROLLERSKI MUST BE INSTALLED ON THE INSIDE OF SKI.**

**THE ROLLERSKI, WHEN NOT ENGAGED, MUST BE POINTING FORWARD.**

**MAXIMUM SPEED WHEN ROLLERSKI ARE ENGAGED IS 20KM/H (12 mph).**

XX POLARIS PARTS  
X QUALIPIÈCES PARTS